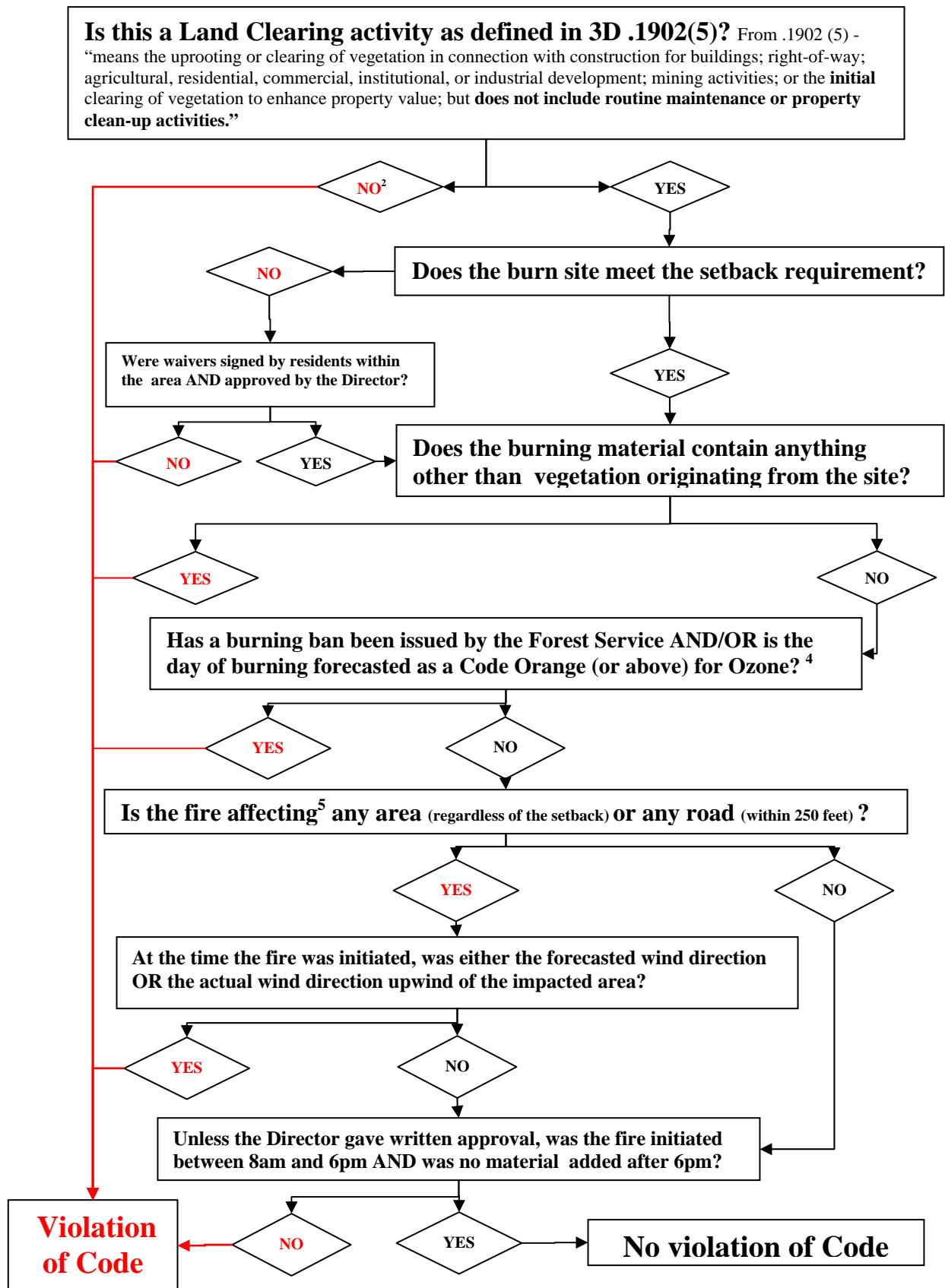


Flowchart for Land-Clearing Open Burning Complaint^{1,3,6}



1. Air curtain burners have differences in setback and some operation requirements but otherwise follow this flow chart fairly closely.
2. If the activity meets the conditions of the regular OB requirements, then no NOV would be issued.
3. Registration is required
4. Department must determine when the fire was initiated related to the time of the forecast
5. Department considers "affecting any area" as an area where humans are being affected
6. Fire does not qualify for any exemptions